



• at New Seabury •

PENINSULA

Volume 47
Number 1
May 2018

News from the Peninsula Council
at New Seabury, Cape Cod

Reporter



in this issue

- 2** Cape Cod Views
- 3** Peninsula Council Annual Meeting
- 5** Photo Credits
- 7** Hoping to Start or Improve Your Bridge Game?
- 10** Village Reports
- 19** Schedule of Village Annual Meetings
- 21** Spring & Summer at Mashpee Commons
- 22** Flowers of New Seabury
- 24** Falmouth Commodores
- 28** A Blast from the Past
- 31** The Association to Preserve Cape Cod Celebrates 50 Years
- 33** 12th Annual Golf Classic
- 35** Welcome New Homeowners!
- 36** Save Popponesset Bay: Rolling Into Spring
- 38** Women's Club of New Seabury
- 41** Men's Social Club at New Seabury
- 42** Come & Sit Awhile With Me
- 44** Country Club Happenings
- 45** Greetings from the Sales Cottage
- 46** News You Can Use



our mission

To provide for the maintenance, preservation and enhancement of New Seabury's environmental setting and promote the safety and welfare of the homeowner's investments.



Hello Sunshine!





President's Report

Joe Fisher

One thing for certain is that winter weather on Cape Cod always has surprises, and this year was no exception. In addition to cold temperatures and snow, this year had back-to-back, back-to-back, back-to-back nor'easters - one of them with 90 mile an hour wind gusts on the Cape. Well, we survived albeit a little bruised. Dozens of trees down and a number of them blocking our roads, but because of Mike Richardson, Tom Caston, and our vendors round-the-clock work, our roads were quickly opened. Thank you, Mike and Tom!

Because of the debris from these storms and the unusually large volume of leaves last fall, our spring cleanup is going to be a major project. Your Homeowners Association has already begun, and it will be completed before Memorial Day weekend. Each of us as homeowners has a responsibility to complete our cleanup at the same time so that the natural beauty of our community shines through at the beginning of the summer season. If you need help finding a landscaper or tree specialist, you can call the Peninsula Council office and we'll supply you with a list of vendors. Our Annual Brush Pickup is scheduled for the week of May 21. Details are in this issue of the Reporter. Please do not place your brush curbside before the 21st.

As a reminder, our Peninsula Council Annual Meeting will be held on Saturday, August 11. This year's meeting will include the elections of our Officers for a three-year term. You'll receive the full agenda and last year's meeting notes prior to the meeting. Please plan to attend.

Please remember that if you plan to do any work on the outside of your home, you need to get a permit from the ARC. Tom Bone at the ARC is available to help you and answer any questions you may have. One hundred percent compliance with the ARC Guidelines will ensure that we will continue to have a very beautiful and special community.

I hope that you, your family and guests enjoy your summer in New Seabury.



2018 PENINSULA COUNCIL ANNUAL MEETING

**THE HOMEOWNERS ASSOCIATION
AT NEW SEABURY WILL HOLD ITS
ANNUAL MEETING AT THE
NEW SEABURY COUNTRY CLUB
SATURDAY, AUGUST 11 • 9:00 am**

**A Continental Breakfast will
be served at 8:30 am**

PENINSULA COUNCIL, INC. HOMEOWNERS ASSOCIATION BOARD OF DIRECTORS

THE BLUFF

One Pointe
(508) 477-7303

BRIGHT COVES

Eric Peterson, Chair
(781) 856-8873
Patricia Bell
(508) 477-2393
Carolyn Donahue
(617) 755-9401
Alt: Margie Decter

FELLS POND

Catherine Power, Chair
(508) 477-2839
Jack Fitzsimmons
(508) 477-4262
Marty Sullivan
(508) 477-7394
Alt: Dr. Ed Cohen

GREENSWARD

Alicia Morrow, Chair
(508) 477-3877
Jeff Aframe
(774) 361-6580
Bill Blaisdell
(508) 539-2400
Alt: Read McCaffrey,
Richard Noonan,
Carol Stenberg

HIGH WOOD

Mariana D'Ambrosio, Chair
(508) 477-3642
Pat McKeown
(508) 477-7113
Alt: Hugo D'Ambrosio,
Geraldine Fernandez,
Cindy King,
Marc Silverstein

THE MEWS

Pat Donohue, Chair
(508) 477-1098
Charles Robinson
(508) 477-1489
Steve Sykes
(781) 775-1878
Alt: Rob Bogosian,
Sheila Robinson,
Tim McMaster

MEWS CONDOS

4C - Emil Chevette

POPPONSETT ISLAND ASSOCIATION

Steven Bell
(508) 477-2393
Jay Galvin
(617) 365-4555
Tony Rochte
(614) 440-9589

POPPY PLACE

George Bell
(508) 477-0076

Julie Everett
(781) 879-0911
Ken Mellett
(703) 442-6518
Jan Swartz
(508) 539-4204
Susan Sweet
(508) 579-0731
Andrew Winig
(617) 794-9797

PROMONTORY POINT

6A - Chair - vacant
6B - Helen Ladd
(508) 274-9378

SANDALWOOD

Karyn O'Connor, Pres.
(508) 477-7699
Richard Lusk, Vice Pres.
(617) 721-6583
Dick Hayes, Treas.
(508) 539-8578
Joyce Connor, Sec.
(508) 477-4084
Mario Vitti
(508) 477-0678
Tony Bolton
(508) 897-8826

SEAQUARTERS II

3Sixty (508) 444-6150

SEASIDE

Joe Pedula, Chair
(508) 419-1798
Ken Liatsos
(508) 477-2834

STENDAHL

Bob Kynoch
(508) 479-6264

SUMMERSEA

Larry Rand, Chair
(508) 477-5241
Sal DiBuono
(508) 539-0244
Fredda Zaiger
(617) 680-0522
Alt: Lorraine Ghibaudi,
Phil Sheridan,
Chris Kilburn

TRITON SOUND

George List, Chair
(508) 477-5314
Jarred Sherman
(646) 418-7542
Alt: Gene O'Donnell,
Mike Murphy

VINEYARD REACH

Steven Kaufman, Pres.
(561) 862-8881
Connie Strait, Secretary
(203) 948-4906
Joe Grainger
Prop. Mgr: One Pointe
(508) 477-7303

Executive Director's Report

Mike Richardson

"Move to the Cape", they said. "It never snows on the Cape", they said. And I believed them!!

Then we have April showers bring May flowers....

Does anybody know how to reach Al Gore??? I am beginning to wonder...

We have had one challenging offseason, and here we are approaching May, and it's only in the high 30s. It's almost enough to make me wear long pants.

And what else, the sound of the bark in the forest was deafening over the past several weeks. Falling left and right, and right on to wires, roads, and houses. It was in fact "tree-mendous"!! We have handled several hundred trees, from cutting down, cutting up, moving trunks, chipping branches, and, in general, cleaning up after what almost was a disaster. Power outages, of course, came along for the ride.

In some order, a great big thanks goes to Tom Staruch, owner of Quality Tree, who was out and about, moving and shaking on his chipper, his backhoe, his lift and his cell phone. He was Tommy-on-the-spot, and everywhere at once. Thanks also goes to Tom Caston who was with Tom Staruch constantly pointing here and there, and directing Tom Staruch to his next stop. The third Tom in this drum roll is Tom Bone who took tons of calls and made arrangements to handle issues. It was a very well organized and well handled work effort and these three individuals should be heartily embraced.

We also applaud the additional tree folks who were out there helping, and of course, our residents who were resilient in the face of no power, responsive to requests from the Peninsula Council, and willing to immediately take action. This is what New Seabury is about...friends helping friends, and neighbors helping neighbors.

There is more to do to clean up. Brush pickup this year will be substantial, but will be done the week before Memorial Day. Landscapers are scraping ice off of their windshields, and they are wearing hoods and gloves, but working hard. Irrigation is being turned on in a week, and we will be ordering flowers and mulch before you know it. In essence, we are telling Mother Nature that she may be the ultimate winner, but we are taking her to overtime each and every game.

I am spending less time in this article to discuss finances as they continue to beat the competition. We are collecting at an extremely high rate as always. Special Maintenance this year will be challenged a little, but incoming fees will make it a reasonable end result. We will still put funds away for yet another rainy day. Much thanks for all who contribute and shame to those who do not.

The northeast seems to be heading in some direction that suggests more and more difficult weather patterns, so we will just plan ahead a little better. Keeping the lights on allows for all of us to enjoy the phenomenal success of our sports teams, both locally and nationally. What other part of the country can boast of football, basketball, hockey, and baseball play at such high standards. If you are not a happy sports fan in the Boston area, you just are not a sports fan.

So we have a lot to be thankful for...our vendors, our residents, our sports teams, our volunteers and Peninsula Council stalwarts, and the sound of drums...Tom, Tom, and Tom...beautiful music.

Welcome back snowbirds...we have set the table for ya.



PENINSULA COUNCIL COMMITTEES

SPECIAL MAINTENANCE COMMITTEE

Tom Caston, Chair • (508) 477-3271
castontom@aol.com

Joe Fisher, Bob Biemer, Dick Noonan, Read McCaffrey

NEW SEABURY RECYCLING COMMITTEE

June Levy, Chair • junervy@gmail.com
Tom Caston, Pat Bell

WEBSITE COMMITTEE

Mike Richardson, Chair • (508) 539-0028
mike@peninsulacouncil.com
Peggy Bone, Tim McMaster

DECORATING COMMITTEE

Tom Caston, Alicia Morrow, Catherine Power,
Carol Stenberg, Fredda Zaiger

ACTIVITIES COMMITTEE

Peggy Bone, Chair • (508) 539-0028
nsha@peninsulacouncil.com
Pat Bell, Pat Donohue

SECURITY COMMITTEE

Joe Fisher, Chair • (508) 539-8623
jfisher8623@comcast.net

PENINSULA REPORTER VOLUME 47, NUMBER 1 MAY 2018

MARY JANE RICHARDSON, EDITOR

PENINSULA REPORTER EDITORIAL BOARD

Tom Caston • Tim McMaster • Mike Richardson

Published by: **PENINSULA COUNCIL, INC.**

Printed by: **LITURGICAL PUBLICATIONS**

Designed by: Linda Valente, **TYPEAGRAPHS**,
Mashpee, www.typeagraphics.com

Peninsula Council, Inc. is a voluntary non-profit
organization of property owners at
New Seabury, Cape Cod

Disclaimer: All copy and classifieds are subject to approval
by the Editorial Board. Advertisements do not imply
endorsement by the Peninsula Council.

Address inquiries to:

Office of the Executive Director
12 Mall Way, New Seabury, MA 02649
(508) 539-0028
Fax: (508) 477-8825
e-mail: mike@peninsulacouncil.com
www.peninsulacouncil.com



Treasurer's Report

Mike Richardson

As we come to the end of April 2018 and realize that time moves ever so fast as we age...the Peninsula Council continues to make positive progress from a financial perspective! That is to say in a nutshell, that the vast majority of residents believe in the mission! The few naysayers - those who do not choose to contribute - while are few, just represent that part of society that believes in taking, but not contributing. We will continue to track and go after each one in the court system. What a shame, and given the opportunity to highlight them in the Reporter, we will do so.

All Villages under the umbrella of the Peninsula Council continue to show a positive financial bottom line. Not only are all bills being paid, but collections (absent the dregs) are at an all time high. Many Villages are carrying six figures in the bank for that rainy day that seems closer than ever. Our bottom line is extremely positive, which allows us to maintain our very conservative annual fees.

Much thanks to all who believe...much criticism to those who do not! I have to believe it's more of a lack of understanding or an ignorance of sorts that prevents contribution. Rather than being angry, perhaps we should feel sorry for those who don't get it?

At any rate, ending on a positive note, we are in great financial shape absent that 100-year storm, and I appreciate all of you that contribute to the goal. You others, well, you know who you are...shame on you.

Special Maintenance Report

Tom Caston

Down came trees - along with the budget. In all the years that I have been involved with the Council, the storms we experienced in March proved to be our biggest challenge in years. The cleanup never seemed to end as each storm proved to be more difficult. Tom Staruch and his Quality Tree crew worked continually, including many late nights, to clear trees and remove brush to make our roads safe and passable. Trees dangerously leaning close to homes and roadways had to be cut and removed. A few examples follow: Nine huge trees were removed from Greensward rotary, some of which had fallen and blocked the roads on all sides. Others were leaning and uprooted along with path lights that were damaged or broken. Rock Landing Road looked like a war zone. Fallen trees blocked the road and paths.

In total, 40 trees were removed along with broken fencing and damaged shrubs. Frogs Leap Pond did not escape the fury. Three large trees were removed from the pond along with many limbs and branches. The water level in the pond was at an all time high with three-quarters of the dock under water. And the beat went on!

Our landscapers have not had the best environment to work in and because of this, we're slightly behind with our landscaping plans for spring and summer.

As I have stated in the past, our drains are also a concern. Many are 50 or more years old and repairs or replacements are necessary. We continue to monitor them on a semi-annual basis and take the necessary steps to keep them in working order.

(continued on page 7)



PHOTO CREDITS

FRONT COVER: Tom Bone

Benches-Come And Sit Awhile With Me: George List

Cape Cod Views: Tom Bone

Country Club Happenings:

Courtesy of The Club at New Seabury

Flowers of New Seabury: MJ Richardson

Greensward: Alicia Morrow

Greetings From The Sales Cottage:

Courtesy of Mike Degnan

Mews: Charles Robinson (storm photos),

Mark Brennan (Mews house party)

Poppy Place: Nancy Haven

Save Popponesset Bay: David Colantuono

(A busy day at the Spit),

others are courtesy of Save Popponesset Bay

Special Maintenance Report: Catherine Power

Snowy Owl: Mark Brennan

Spring & Summer at Mashpee Commons:

Courtesy of Mary Derr

Triton Sound: George List

Vineyard Reach: Connie Strait

Women's Club of New Seabury: Carolyn Noble

Back Cover: Tom Bone

OFFICERS 2015-2018

PRESIDENT

Joe Fisher, Greensward (508) 539-8623

FIRST VICE-PRESIDENT

Darlene Furbush, Greensward (508) 477-1691

SECOND VICE-PRESIDENT

Pat Bell, Bright Coves (508) 477-2393

TREASURER

Jane Goubeaux, Bright Coves (508) 477-4345

SECRETARY

Mary Jane Richardson, Greensward (508) 477-3280

PENINSULA COUNCIL

EXECUTIVE DIRECTOR

Mike Richardson

mike@peninsulacouncil.com

Peggy Bone, Administrative Assistant

nsha@peninsulacouncil.com

(508) 539-0028

ARCHITECTURAL REVIEW COMMITTEE

Tom Bone, ARC Administrator

(508) 477-8855

Steve Cook of Cotuit Bay Design

Tim McMaster, Member



ARC Report

Tom Bone



"Honey! Wake up. Wake up!"

"Oh, just go take some Pepcid..."

"Nooo...Wake UP!"

"What is it?", he said, now awake, "What time is it?"

"Listen. There's someone outside."

"Wha..." He listened intently....

"Do you hear anything?", she whispered.

"Yes, I heard them say, 'Do you hear anything?' What woke you?"

"Car doors slamming. Several."

He looked at his bedside clock. It showed 5:00 am in blood red numerals. He rationalized that some neighbors just returned from a trip; or, perhaps...and the motion-detection lights went on over the garage, casting unwelcome shadows in the master bedroom. He pulled himself upright in bed, all ears, justifying his Sea Captain Uncle's purported remark upon first meeting the lad on one of his few port-of-call visits: *"Good grief"*, he said, taking an ear in each thumb and index finger and pulling the boy to his toes, *"if his ears were any bigger he could fly!"*—how he'd relished that uncle's funeral, thinking he'd finally be rid of him – and now his auditory prowess kicked in.

He heard several splashes down at the pond, the frogs beating feet out of there. He heard his Rottweiler's paws clicking on the new deck he just had installed as the animal rhythmically paced around the huge, unwieldy structure, not barking, just pacing. The behemoth was professionally trained as a guard dog by a local agri-business, Troon Farms, but Cerberus hadn't barked once since he arrived, except when the beast heard a passing car blasting out *"Casey Jones"* on its stereo system and he'd barked and romped around the yard like a puppy. When Cerberus stopped pacing on the deck below, he leaned over on his elbow and peered out the window. Cerberus sat in the far corner of the deck on his rump, his back against the deck railing, one paw over his muzzle and the other pointing towards the front of the house.

His daughter's cat came roaring around the corner and into their room and flew under their bed with a timid, high-pitched whine as explanation. Until then, he didn't know his daughter had a cat.

His wife grabbed his arm, pulled herself half behind him, and said in a whisper: *"There's a whiffle ball bat in Jimmy's room...."*

He thought he heard a crisp walkie-talkie blurb. Then another. With that, utilizing decibels and a tone unique to his kind, the noxious family parrot, Friday, bequeathed to him by that same sea-faring uncle, screamed from the first-floor den, *"The Coast Guard, you #@%\$%\$#s. The Coast Guard. Squawk. We gotta book. Squawk."*

He felt some relief when the home security alarm blared its message, not only for somewhat muting Friday's ongoing avian invective; but, at least he knew for certain there was someone out there. But, whatever was out there is now inside. No doubt about that. He distinctly heard the front door land on the entranceway floor and the pounding of several pairs of boots taking the stairs two-at-a time, then hammering down the hall towards their room – they knew where they were going – and before he could lean over to turn on the lamp or jump out of bed to accost the accosters, not that he planned on doing that, an industrial grade flashlight blinded him.

A figure hovered over him. Only see a shape, no visage, no details. The figure leaned in and breathed the message slowly, each word distinct, delivered in a basso coated with onion. Not good onions, you know, like your Mom used to sauté or maybe caramelized onions, or the onions you get at The Club with a Gibson. No, raw, nasty onions; a vocal salt in the wound. He heard his interlocutor grinding his teeth between each syllable, as he said: *"You didn't get a permit for your new deck, did you, Citizen?"*

Thankfully, since November 9, 1989, homeowners...most homeowners...don't need to worry about this type of intrusion. But, still, we'd like you to contact us regarding any external improvements you plan for your home or your property. We want to work with you. Just give us a call or shoot us an email. If you wish, come by some day for lunch. We specialize in deli sandwiches with fresh onion.

Special Maintenance Report (continued from page 5)

This report sounds a bit like “doom and gloom”, but not to worry, summer is just around the corner and we always get the job done. New Seabury will continue to look great!



Seven logging trucks were used to carry out the downed trees.



Trees were uprooted at the Greensward rotary and throughout New Seabury.



ARE YOU HOPING TO START OR IMPROVE YOUR BRIDGE GAME?

Starting June 6, Mariann Farrelly, an ACBL certified bridge instructor, will be offering 4 weeks of structured and engaging bridge lessons.

Wednesdays, 9-11 am

New Seabury Country Club • Beginners and intermediate players welcome.

For more information or to reserve your spot, contact Mariann at dockymariann@aol.com.





thomas j o'neill, inc.
custom seaside homes and remodeling



thomas j o'neill, inc.
508.477.5600 | thomasjonell.com

design • build • interiors • landscape • remodeling

Photo: Jeffery Dyer/Contra

Northstar Construction

New Homes • Additions • Remodeling • Demo-Rebuilds



Before



After

- **Zero Maintenance Siding**
- **Lifetime Roofing**
- **Composite Decking and Railings**
- **Zero Maintenance PVC Trim**
- **High Performance Windows & Doors**

**We offer full service Design,
Planning and Building Services.
Together we will design your project
to meet your needs and budget.**

Custom Homes on Your Lot or Ours! Since 1983

**465 E. Falmouth Highway, (Rt. 28), E. Falmouth
508-548-2641 • www.northstarconstruction1.com**



*Looking to **SAVE** on
your energy bills?*

Cape Light Compact has energy and
money saving programs available to you.
Take advantage today!

Single Family Owners/Tenants

Call (800) 797-6699
to sign up for a home
energy assessment.

Condo Owners/ Tenants

To start saving, call
(800) 594-7277.

Benefits of an Energy Assessment*:

- FREE high efficiency lighting
- FREE air sealing
- Insulation incentives
- Rebates available for refrigerator replacement, heating system and other energy efficient measures

*Offers may vary depending on program



For more information or to
find out about other program
offerings, please visit
www.capelightcompact.org.

Sponsor of:



SPECIAL NEW SEABURY RATE AVAILABLE



Cape Cod's First All-Green Livery Service

Service to Logan, T.F. Green, and Amtrak
for your business and travel needs.

Requested destinations, nights on the town for
Boston and Providence, and your favorite points
of interest for leisure and tour.

**Spotless Vehicles - Exceptional Drivers
Fully Licensed - Abundantly Insured**

**24/7 Representative: 508-563-6472
www.GoGreenShuttle.com**



Request An Upgrade

Emerald Class Service

Stylish and well-appointed travel in a Lexus,
Highlander or Mercedes, Complimentary
Cape Cod Life, Fine Chocolates and Perrier.



Village Reports

• at New Seabury •

Bright Coves

Eric Peterson

email:hansonpeterson@aol.com

Bright Coves village has many new home construction projects underway. We ask that you please be patient with these projects as we realize they produce lots of noise, trash, and mud on our streets. We are working with

the ARC, Peninsula Council, and contractors to minimize the problems.

Wishing all a happy and healthy spring and end of school year.

Reminder: No dogs are allowed on the Spit between April 1st and Labor Day.

This rule is being heavily enforced as Audubon and Natural Heritage have been documenting dog tracks on the Spit in their daily reports. The endangered birds could actually abandon their eggs and chicks if they sense the presence of any dogs on the Spit. Some disrespectful and uninformed dog owners are still bringing their dogs on the Spit at odd hours so they don't get caught, but the tracks tell the truth. If you see a dog on the Spit, please ask the dog's owner to remove it if you are comfortable doing so. People who do not respect the no dog rule are jeopardizing access to the Spit for all; imagine if people weren't allowed on the Spit from April 1st to Labor Day. It could happen. Please visit savepopponesetbay.org to learn more and join our email list if you're not already receiving news and updates from Save Popponeset Bay.

Send us your photos of New Seabury, Cape Cod or scenes of local interest.



We will put them in the *Reporter* or on the Peninsula Council website. Be sure photos are high resolution. Email photos to pccomm@comcast.net with the word **PHOTOS** in the subject line.

**FOR
QUESTIONS OR
CHANGES TO THE OUTSIDE OF
YOUR HOME**

Call the ARC at (508) 477-8855

Or send an email to

arc@peninsulacouncil.com

Fells Pond

Catherine Power

Email: cpower148@comcast.net

Hopefully, by the time you receive this edition of the Reporter, we will have experienced some signs of spring. So far, it's been totally blah - fallen trees everywhere, fences down (including mine), and a mess everywhere. I think we jumped the gun with an early cleanup in February. Surprise, we had to redo it. We have had six trees down across the road in Fells Pond, plus trees leaning over the roads and on top of homes. As you can see, we have been on the job every day since our big storms in March. What would we have done without Quality Tree to come in to unblock our roads and cut up fallen trees? We still have a ways to go. Other than all that, "good news" - we are doing great in Fells Pond. Storm drains are working well, holes in the roads have been patched, and spring and summer will happen. I can't wait.

The sides of the roads and the walking paths on Fin Way and Mar Way have been cleaned and beaches are ready for all our summer activities. We've scheduled our pond treatments, which should begin in June. Our budget has been tested with the costs of cleanup, but we are still in pretty good shape financially.

Our Village meeting will be on July 14 at 10:00 AM at the Mashpee Congregational Church at the Marketplace. Come meet your neighbors, enjoy coffee and goodies, and discuss your concerns etc. (hopefully no complaints).

Stay warm and look forward to fun on Fells Pond.

Buying an AWNING: When quality matters "Dare to Compare"

Aristocrat vs SunSetter

Warranty	12 yr Full	5 yr Prorated
Valance Styles	11 choices	1 choice
Width Sizes	8' - 23'	9' - 20'
Projections	5 choices	2 choices
Fabric Choices	200+	15



And ... We Guarantee to be at **least 5%** less in price than the competition.
Better quality, better price! CALL TODAY **(508) 539-3307**



Your Awning Specialist,
including Phantom®
Screens, Solar Shades
and Hurricane Shutters
Pocasset, MA

www.screensNshutters.com



Aristocrat™
AWNINGS
SHADES • CANOPIES

GREENSWARD

Alicia Morrow

Email: morrowmam@yahoo.com

Who has seen the wind?

Neither you nor I:

But when the trees bow down their heads,

The wind is passing by.

— By Christina Rossetti

In March 2018, Greensward Village homeowners may not have seen the wind, but they certainly felt its fury. Four nor'easters roared through our Village with strong wind gusts that left power outages, fallen trees and broken limbs behind. Mike Richardson, Tom Caston, and Tom Staruch of Quality Trees worked tirelessly to clear the damage and keep our residents and roads safe. Mike also notified absentee homeowners of potential problems related to trees leaning dangerously on their properties. As a result of the storms, we anticipate that the Brush Pickup and Snow/Storm Cleanup expenses will far exceed the 2018 Budgets.



Chase sitting beside a downed tree.

The Annual Brush Pickup will be the week before Memorial Day. Please do not pile brush near the roads until that date nears. In addition, it is time to take down the snow poles and to check the angle of your mailboxes – if they are still standing!

HIGH WOOD

Patrick McKeown

Email: mckeown.p@gmail.com

We had a relatively mild winter season until March hit!! Who would have believed February was warmer than March? Three northeasters in succession caused downed trees and major power outages in New Seabury. Hacking Circle had a large pine tree take down power lines and made the road impassable. The tree could not be removed until Eversource took care of the live wires. Surrey Place had a large pine tree fall across the road, blocking any access. Our Peninsula Council, led by Mike Richardson, Tom Caston, and Peggy and Tom Bone, fielded numerous calls and requests despite having no power themselves. We are extremely thankful for their quick response in getting the community back together in quick order. It took Eversource sixty hours to get our power back in Highwood. Thankfully, no injuries were reported. We certainly are fortunate to have a vendor like Quality Tree. Tom Staruch and his crew worked tirelessly throughout the storms to clear roads and

passageways of debris in very difficult conditions. If you see Tom and his crew in the community, please show your appreciation towards them.

Because of these storms, a community assessment was performed by Mike Richardson and Tom Caston. A plan was developed to address issues that could occur with future storms. As a result, an email was delivered to certain property owners that have trees that are in danger of causing issues in the future. We would appreciate it if these homeowners act regarding these trees. We will also be removing some trees in the reserve areas that could be problems soon.

Fee collection is currently 86% of our projected revenue. This is slightly behind last year's collection rate. Considering the extra monies expensed with the storm cleanups, prompt payment would be appreciated.

One new home is under construction on Surrey Place. Many minor remodels are in progress. The annual brush pickup will happen the week before Memorial weekend. We urge all property owners to avail of this opportunity to clean up their yards.

We welcome back our seasonal residents. Remember to drive slowly and please keep our roads clear of litter.

The Mews

Charles Robinson for Patty Donohue
Email: pattydonohue@hotmail.com

It started out in the Mews as a mild winter - not too much snow and not too cold. Then, March roared in bringing with it three nor'easters, two of which caused quite a bit of damage, with winds as high as 90 miles per hour. Fences, trees, and limbs were down throughout the Village and all of New Seabury. We lost power in one of the storms for more than a day. Thanks to Tom Caston, Mike Richardson, and the entire Peninsula Council for their effort toward keeping our roads clear and safe. It's now mid-April as I write this, and the temperature is in the twenties. Where is spring?



Cleanup will be necessary this spring as the storm and high winds affected many homes in the Mews.



Your Mews Committee has hired a new landscaper this year - Rick Corey and his crew. He comes highly recommended by the Peninsula Council. There will be a lot of cleanup necessary this year on everyone's property; be prepared.

The Annual Mews Village Meeting will be held on June 9 this year at the New Seabury Country Club. Continental Breakfast will be served at 9:00 AM followed by a very important meeting. Please make a special effort to attend.

Looking forward to a wonderful summer for all the residents of the Mews Village.



What better way to spend this past blustery season than at a well-attended gathering with your Mews neighbors.



For Safety Sake

When you're out enjoying our community, please:

- ◆ Slow Down and follow the posted limits and rules of the roads.
- ◆ Walkers, joggers and bikers share our roads.
- ◆ Take note of those around you as you drive throughout our neighborhoods.

Popponesset Island

Steve Bell

Email: bell.s@me.com

Ramblings from Popponesset Island

It's been a brutal winter.

The island is still above water.

One beautiful new house is almost done.

Another one is partly finished.

One has come to a temporary halt.

There were a couple more homes sold.

We all should greet our new neighbors.

*Why do some folks insist on speeding down
our streets?*

Trucks keep coming over and into the bridge.

*New and updated cameras are now in place
on the bridge.*

The bridge will be painted again.

Why can't vehicles have drivers who can steer?

Why can't dog owners pick up after their pooches?

Why do folks throw junk out of their car windows?

New LED lamp at Bight Circle is great.

Possibly more LEDs replacing gas lights coming.

*Why is it that the busiest people are the only ones
who volunteer?*

When you smile, don't you feel better?

The Spit held up.....thanks to Save Popponesset Bay.



**FREE
ESTIMATES!**



**Clipper
Landscape**

**UMASS
EDUCATED!**

Maintenance & Enhancements

**Spring & Fall Clean Ups
Edging & Mulching
Pruning
Lawn Mowing
Annual Plantings
Property Maintenance
Horticultural Services**

Design & Construction

**Landscape Design & Site Planning
Patios & Walkways
Stairs & Stone Walls
Water Features
Planting Designs & Installations
Lawn Installations**

Irrigation & Lawn Care

**Irrigation System Design
Installation
Start Ups & Shutdowns
Maintenance
Lawn Fertilization Programs
Tree & Shrub Care
Aeration, Dethatching & Seeding
Winter Moth Spraying**

508-563-LAWN

www.ClipperLandscape.com

117 Industrial Drive Ext., Mashpee, MA

Poppy Place

Nancy Haven

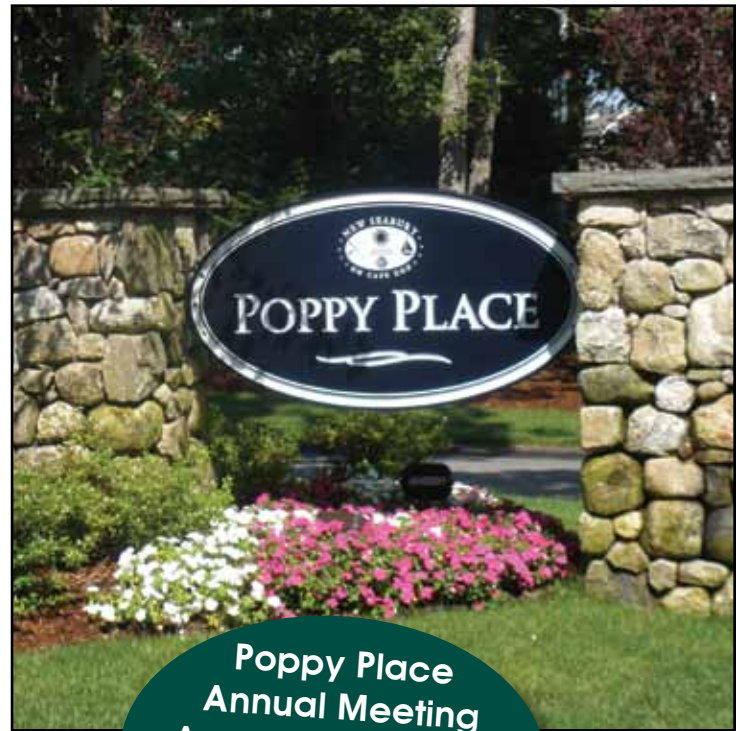
Email: mvygirl@icloud.com

The winter appears to be behind us and was, for the most part, fairly mild weather. March, with the advent of spring, took all by surprise with three nor'easters. The normally quiet offseason turned dreadfully quiet with the last of the three destructive storms. Nearly three days without power challenged New Seabury and the cleanup operations. Hurricane force winds toppled nearly a dozen trees here in Poppy Place. The storm winds, reported at 80 MPH, downed many old trees along our access roads. Utility lines were brought to the ground further complicating the cleanup process. The damage to trees in our community was considerably less than many others in New Seabury. Strong winds and rain made a more prominent appearance this winter than in years past.

Our property manager jumped into action and quickly had a tree expert on site to survey our short and long terms needs. Over 50% of the



Hurricane force winds toppled nearly a dozen trees in Poppy Place.



**Poppy Place
Annual Meeting
August 11th • 8 am
at the Country Club
2nd Floor Conference
Room**

damaged trees occurred in our common areas and are scheduled for removal or repair later in April. This expense will impact our 2018 budget. Individual properties were assessed for damages as well. Owners will be contacted by Mike Richardson for next steps and costs to handle the needs of the property. There are a few cases of diseased and nearly dead trees on abutting property lines. Thus, if you don't know your neighbors, this would be a good time to make an introduction and perhaps share the costs associated!

With the nearing of warmer weather, a reminder for your calendar:

**Neighborhood Cheers to Summer on June 23
Hosted by the Everett family at # 2 Poppy Place**

Promontory Point 6A

Christine Hirshland

chirshland@aol.com

Spring has brought a new look to our cul-de-sac. New solar lights have been installed as a temporary replacement to the old broken and mismatched landscape lights around the circle, providing a clean, consistent look. In

addition, all the garage-mounted walkway lights are being fixed and will run on sensors or timers to provide illumination all night long where it is needed the most for safety. Finally, more trees and tree limbs were removed after being damaged during the series of March nor'easters. This loss of trees, combined with all the trees that were removed following the October storm, will make the neighborhood much brighter and sunnier than it has been in past summers.

Sandalwood

Karyn O'Connor

Email: ciao713@gmail.com

Here's hoping that spring is here to stay! Our Village suffered a lot of tree and limb damage and loss in the March nor'easters, but not as much as some areas had, so we should be grateful for that. By the time you read this newsletter we are hoping that our Village spring cleanup is completed and everything is looking great for our summer visitors!!

We'd like to give you an update on some Village projects and issues that you may have been wondering about.

- We had lost power to the Guard Shack and found that the reason was rotting wires underground. We did a quick fix, but will go back and have to install a protective covering on the wires that are exposed so that we don't have additional issues down the road.
- The response to the tree damage and storm cleanup went exceptionally well and we think that Quality Tree and LBM did great jobs getting us in back in shape for summer. If you were contacted by the Peninsula Council about the status of any trees on your property, please pay special attention to their advice. There are a few trees on personal properties that are very fragile and very susceptible to damage in another wind storm. Safety is our main concern – so please take their advice seriously and have an expert examine your trees.
- Remember to clean up your yard for the summer season and take care of any outside repairs that are needed. It's your responsibility to take care of branches and debris that are on your property. Let's all work together to make our homes look extra nice this year. And, it keeps our property values in line with New Seabury's other Villages.

- The spring brush pickup will be the week of May 21st before Memorial Day. Please be sure you've stacked your branches neatly so that they can be accessed easily. The max size of each branch is 6 inches in diameter – if you have bigger pieces you will need to either chop them into smaller sizes or remove them yourself.
- LBM Masonry and Landscaping has done such a great job with our spring cleanup. As an FYI - They are available for personal property use as well. You can contact Luis Magalhaes at 774-836-5307 or at lmmasonry1@gmail.com if you're interested in having them do some work for you.
- We have four houses for sale in the Village at last check – ranging in price from \$379,000 to \$550,000. We are sorry to see our neighbors leave us, but we wish you all well. Thank you for your contributions to making Sandalwood a better place to live over the years, and we are looking forward to meeting the new folks! We also have one new house going up on West Way – it looks like it's going to be beautiful. Progress!

Thanks to all of our good neighbors who keep us informed when things go wrong!

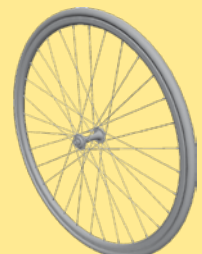
Check out the Sandalwood website. We are trying to do a better job of communicating with everyone, and we are posting seasonal updates on our web page – the latest is titled "Spring 2018 Update". We have also posted the 2017 actual numbers and 2018 budget numbers. Check back soon to get your up-to-date information.

PLEASE REMEMBER THAT SANDALWOOD HAS A LEASH LAW! We've had some complaints about dogs roaming free and/or running alongside their owners on our streets. You are responsible for your dog's safety, not your neighbor. No one wants anyone's pet to be injured so please be cognizant of the laws of the Village and Town of Mashpee and keep your pet safe. In addition please make sure you are "cleaning up" after your dog!



***When you're out enjoying our community,
for your safety, make note of the following:***

- Ride your bike on the side of the road with the traffic.
- Walk or jog on the side of the road facing the traffic.
- Use the walking paths as much as possible.



SUMMERSEA

Larry Rand

Email: lirmdusa@aol.com

Is it here yet? I'm talking about spring. I'm getting conflicting reports. My calendar says it's May, but most everything else says March with a touch of February. Ask the marathon runners; they'll tell you. It's amazing, though, how these shrubs and plants know when it is spring despite the weather. My forsythia started to bloom the first week in April and my daffodils were in full bloom by then. Daylilies were starting to come up and a rare hosta was nudging through the soil.

The weather is turning and we will get our three weeks of spring before the end of June. There are docks and an occasional boat in Ockway Bay and people are returning to Summersea Village. Cleaning up your properties should be among your first priorities. It's been a tough winter with a lot of tree damage, and to be honest, most properties are a mess. Kudos to Mike Richardson, his staff, and contractors for keeping our roads passable

and safe. The Village has had to do extensive tree work and you may also have some to do. Smaller branches and brush may be placed at the street on your own property, not on islands, common land or your neighbor's pile. We will come by and pick these up at the end of May. Grassy areas and paths and driveways need to be cleared of leaves and debris as does your property abutting the street. We have cleaned the islands around the Village and hope you will agree that neat, clean properties enhance the look of Summersea and add value for all of us. To that end, we have hired a new gardening contractor, Rick Corey, who we know will do an excellent job of keeping our entrances, roads and common areas looking great.

Welcome back to beautiful Summersea Village in New Seabury. Our annual meeting is scheduled for July 28 at 9:30 at the Mashpee Congregational Church. Election of a Committee member to represent you at the Peninsula Council will take place as well as discussion of other important Village issues. Try to attend. Hopefully, we will see you before then as we enjoy the summer season we know is coming soon.

BREAKAWAY

Your Local Barbeque Grill, Patio, and Fireplace Specialists



Spirit II®
New for 2018
and
economical

Summit®
High Quality
and
exclusive
features

High Performance
Many Sizes
and Options

Cape Cod's ONLY Weber Alliance Dealer

17c Trinity Place Rt. 28 Mashpee Next to Boston Interiors **508-539-1674**
435 Rt. 134 South Dennis next to Mid Cape Home Centers **508-398-3831**



www.barbequegrills.com

TRITON SOUND

George List

Email: gfbalist@gmail.com

The calendar says April and spring, but it sure doesn't feel like it.

We had four nor'easters in less than one month and they have played havoc on New Seabury. The last one at the end of March left Triton Sound without electric power for over 54 hours. With all the rain and wind from the first three storms the fourth one came in with wind and a heavy wet snow that took down many trees along with the power lines that come into New Seabury. Triton Sound had many trees toppled along with numerous fences. All of New Seabury was without power and downed trees were everywhere. I cannot say enough about the extraordinary work done by Mike Richardson and Tom Caston in riding around and coordinating the great work done by many. A special thanks to the Quality Tree men who were everywhere cutting and chipping to get our roads open. Work is ongoing and many places will look a bit different this spring. One plus was that Mother Nature's wind and tides have given us a beach for a month or two on Triton. History tells us that as the west winds change the flow of the tides back to normal, the sand will leave as the beach goes away.

Our new drainage pipes on the Marjorie's Way walking path held up well in all the rain, but the same can't be said for the drains on the west end of Shore Drive West. The road was flooded on several occasions, and it has started to wash out around two of the drains. These will have to be dug up and repaired while working to figure out the problems.



Flood waters along Shore Drive West during the storms.



Not your typical spring!

This spring, we are expecting to have work done on the Shore Drive West walking path to remove the roots, rocks and ruts that have made walking difficult. They will also be putting down some additional stone dust after the maintenance work is completed. For the safety of all, we will be reviewing the placement of our speed bumps. I would expect this to be a topic of discussion at our August Village meeting.

A few of our residents have ARC permits out for some repair and landscaping projects this spring. We look forward to seeing these improvements as we walk around the village.

I congratulate our winter residents on surviving a tough winter, and we look forward to welcoming the rest of you back.

Think sunny and warm.

Vineyard Reach

Connie Strait

Email: iseestrait@yahoo.com

Vineyard Reach is preparing for summer, and our spring projects are under way. The winter was harsh on our landscaping with several large limbs down and many trees uprooted. We have had our arborist out to examine the damage and they have started the work to make our community beautiful for our residents. We have had our buildings inspected for any minor painting touchups and a thorough exam of our gutter system, which will require some gutter replacement and repairs. We will have our annual meeting in July and look forward to meeting all our new homeowners. It is hard to believe that it is just around the corner before we enjoy a summer night



Enjoying the warm weather and views of the Vineyard..

on our decks enjoying warm weather and our views of the Vineyard!

~ 2018 VILLAGE ANNUAL MEETINGS ~

BRIGHT COVES

Sunday, July 15 at 4:00 pm
Mashpee Congregational Church

FELLS POND

Saturday, July 14 at 10:00 am
Mashpee Congregational Church

GREENSWARD

Saturday, July 21 at 10:00 am
Mashpee Congregational Church

HIGHWOOD

Saturday, July 28 at 1:00 pm
Mashpee Congregational Church

THE MEWS

Saturday, June 9 at 9:00 am
New Seabury Country Club

POPPY ISLAND

Sunday, June 10 at 4:00 pm
New Seabury Country Club

POPPY PLACE

Saturday, August 11 at 8:00 am
New Seabury Country Club

SANDALWOOD

Saturday, July 21 at 10:00 am
New Seabury Country Club

SUMMERSEA

Saturday, July 28 at 9:30 am
Mashpee Congregational Church

TRITON SOUND

Saturday, August 4 at 9:30 am
Mashpee Congregational Church

VINEYARD REACH

Sunday, July 15 at 10:30 am
New Seabury Country Club





Receive a
FREE MONTH
of mowing!
Call today for
details.



LANDSCAPE CONTRACTORS

All facets of landscape design, construction & maintenance.

28 Nicoletta's Way, Mashpee, MA 02649 · 508-477-4814

www.maffeilandscape.com · info@maffeilandscape.com

Spring and Summer at Mashpee Commons

Mary Derr

There is plenty to do at Mashpee Commons this spring and summer.

May is here and Memorial Day is just around the corner! Mashpee Commons will be booming with events and activity this season. If you've been following along with the Mashpee Commons by Design initiative (Mashpee Commons community design initiative) than you won't want to miss the next phase of the project, which will be a week-long community design charrette entitled Mashpee Commons Master Plan Week. The event will take place from Thursday, May 3rd through Wednesday, May 9th in a pop-up design studio located at 17 Market Street (next door to Vineyard Vines) and will culminate with a presentation of an updated master plan for Mashpee Commons.

"We're excited to host Mashpee Commons Master Plan Week, and we invite the community to join us in this important phase of the design process," said Buff Chace, Managing General Partner for Mashpee Commons, LLC. "We've learned a great deal from our Visioning Workshops and Tuesday Talks, and we're looking forward to using this design week to seek further input into the master planning process for Mashpee Commons' undeveloped property."



Mashpee Commons By Design Visioning Workshop.

Beginning last fall, Mashpee Commons hosted a series of public visioning workshops and Tuesday Talks for Mashpee residents and stakeholders to share ideas on what they imagine for the future of the Commons, and to learn more about some of the recurring themes that were emerging. The events attracted hundreds of attendees and resulted in scores of valuable suggestions.



Cape Harmony performing in Central Square during Sidewalk Fest 2017.

Mashpee Commons has been recognized both regionally and nationally as a model for Smart Growth. For decades, Mashpee residents have enjoyed the Commons' wonderful public spaces, community events, and its retail, dining, and residential offerings. Mashpee Commons by Design was created as a means to directly engage the community to offer feedback on the next phases of Mashpee Commons. A full schedule of Mashpee Commons Master Plan Week events can be found at: mashpeecommons.com/future/

In addition to the Mashpee Commons by Design related events, Mashpee Commons is planning numerous community activities for the spring and summer seasons. Events such as their Sidewalk Festivals and First Friday concert series will be back this year, as well as a full calendar of events at the new Bandstand including live music, movie nights, and theater performances. Old favorites like the Mashpee Commons Farmer's Market will be back as well. All events will be free and open to the public, details will be posted on Mashpee Commons website and facebook page: mashpeecommons.com/calendar/facebook.com/MashpeeCommons/

For more information, contact Mary Derr at mderr@mashpeecommons.com





Yes, there will be a summer, and now is the time to plan and start the garden. We will assume you have a bit of information on your ph levels – have some top soil- not native sand - and know that all plants need sun. For good flowering you need a minimum of 4-6 hours and with rare exception 8-10 will be better.

We gardeners may be all up to our ears on information on hydrangeas, but just a couple of timely hints. Older hydrangeas on the Cape (10 years plus) are probably ‘Big Leaf’ or ‘Nikko Blues’. These bloom only on old wood. If you prune, you get no flowers, if they are left alone they reach 5-6 feet high and equally wide. If planning on adding a hydrangea, due to our erratic winters, we recommend ‘Panicle’ or ‘Smooth’. Both bloom on new wood and will not be affected by winter. Examples of Panicle are Vanilla Strawberry, Limelight and Quickfire. A good example of Smooth is Annabelle.

However, we have all witnessed the magnificent bounty of beauty in our Cape Cod gardens. Some thoughts and tips on how to achieve this in your garden follow:

1. Remember the rules of the sun at the beginning of this article.
2. Good soil, part humus, small amounts of sand, low clay and adding organic material. Organic fertilizers are a must. Avoid chemical fertilizers, except to give a quick boost. However, they do work very well on annuals.
3. When planning, think about your lifestyle - when you are here and who does the work.

PERENNIALS

Perennials have distinct pluses and minuses.

Pluses:

- Grow back every year
- Self-propagating or easy to separate
- Beautiful varieties for stunning effects
- Easy to fertilize –one or two times per season organically

Negatives:

- Short bloom time
- Subject to disease and insects
- Need deadheading

A list of easy-to-grow and dependable perennials would include:

1. Phlox – great color selection, self propagating. To avoid mildew, look for ‘David’ Whites
2. Daisies – look for ‘Becky’, a long-lasting, big flower plant
3. Black-Eyed Susans – birds love them, get better every year
4. Coreopsis – similar to Black-Eyed Susans, but more variety
5. Perennial Geraniums – the best species is ‘Rossanne’. Spreads to large plant, nice blue color, blooms June to November
6. Catmint – a can’t-miss plant
7. Columbine – short lived (2 to 3 years), but a great spring show
8. Daylilies – another can’t-miss plant
9. Clematis vines – a little fussy, but worth the effort. Pay strict attention to pruning instructions
10. Roses – both shrub and climbers lend to the uniqueness of Cape gardens. Highly recommended are the “Knock Out” roses, which are impervious to disease and insects, and bloom almost constantly
11. Foxgloves – buy one and look for volunteers all over your garden in future years
12. Irises – great variety, one for everybody
13. Fountain Grass – mix in for effect

ANNUALS

Most annuals will bloom all summer, especially if fertilized regularly. Use chemicals (Miracle-Gro, etc.) and deadhead (just pinch blooms with hands or pruners.)

The following is a list of some great annuals:

1. Petunias – keep tidy, cut off long stems. Look for ‘Wave’ for extra blooms and less deadheading
2. Impatiens – the blight of past years is over, but for sure-fire effects, use ‘New Guinea’. They can flourish even in substantial shade
3. Begonias – beautiful blooms, summer into fall
4. Angelonia – an especially gentle, colorful less well known flower available in white, pink and blue
5. Lantana – non-stop tiny blooms
6. Sweet Potato Vine – a great supplement to all flower gardens - won’t stop growing
7. Pansies for spring
8. Marigolds and Zinnias

A final thought: Don’t forget the option of condensing your garden into a pot. You can enjoy the fruits of your labor wherever and whenever you choose to relax. This garden is moveable allowing you to follow the sun. It is easy to care for and a concentrated version of your gardening imagination. Enjoy the sure-to- come great summer of 2018 here in our beautiful heritage known as New Seabury.

Falmouth Commodores

Franchise of the Cape Cod Baseball League

Bob Curtis

It is that time of year again when residents and visitors to Falmouth and the surrounding areas begin thinking about summer baseball, particularly the Falmouth Commodores, one of ten teams in the preeminent Cape Cod Baseball League (CCBL). The tradition of the CCBL spans decades, and is as much a part of the Cape as the beautiful beaches, clam bakes, and ice cream. Every summer the CCBL brings together a group of young men with a diversity of accents, from colleges and universities in the South, Midwest, and West Coast, not to mention New England, to play America's national pastime sport in one of the country's most beautiful areas. These are the best college players in the country, with 80% being drafted by Major League Baseball. The Falmouth Commodores, located just down the road at Guv Fuller Field near downtown Falmouth, is one of the original teams of the CCBL. Former Commodores include Jacoby Ellsbury (Yankees), Brandon Finnegan (Reds), Kyle Gibson (Twins), A.J. Pollock (Diamondbacks), Rhys Hoskins (Phillies), Chad Bettis (Rockies), and Andrew Heaney (Angels), to name a few. Come and enjoy a game and see some of the best amateur baseball in the country. Also, there are opportunities for families in New Seabury to host a player for the season. It is a wonderful experience leading to lifelong bonds and friendships with the player and his family. For more information, visit www.falmouthcommodores.com.



FALMOUTH COMMODORES 2018 SEASON SCHEDULE

HOME GAMES PLAYED AT
GUV FULLER FIELD
790 MAIN STREET, FALMOUTH

SUN	MON	TUES	WED	THUR	FRI	SAT
Away		June 12 6pm @Hya	June 13 6pm Hya	June 14 6pm @Bou	June 15 6pm War	June 16 5pm @YD
Home	JUNE					
June 17 3pm Har	June 18 OFF	June 19 6pm Bou	June 20 6pm YD	June 21 6:30pm @Har	June 22 6pm @Hya	June 23 6pm Cha
June 24 2pm @Bre	June 25 OFF	June 26 7pm @Cha	June 27 6pm Ori	June 28 OFF	June 29 6pm Cot	June 30 6pm @Bou
July 1 5:30pm Bre	July 2 6pm Cot	July 3 7pm @Ori	July 4 OFF	July 5 5pm @Cot	July 6 6pm Cha	July 7 6:30pm @War
July 8 5:30pm Bou	July 9 5pm @YD	July 10 OFF	July 11 6pm @Bou	July 12 6pm Hya	July 13 6pm YD	July 14 6pm War
July 15 5pm @Cot	July 16 OFF	July 17 6:30pm @War	July 18 7pm @Ori	July 19 6pm Ori	July 20 6:30pm @Har	July 21 6pm Hya
July 22 All-Star Game 6pm Har	July 23 OFF	July 24 6pm @Hya	July 25 6pm War	July 26 OFF	July 27 6:30pm @War	July 28 6pm Bou
July 29 7pm @Cha	July 30 OFF	July 31 6pm Bre	Aug 1 6pm Cot	Aug 2 4:30pm @Cot	Aug 3 OFF	Aug 4 Playoffs
Aug 5 Playoffs	Aug 6 Playoffs	Aug 7 Playoffs	Aug 8 Playoffs	Aug 9 Playoffs	Aug 10 Playoffs	Aug 11 Playoffs
Aug 12 Playoffs	www.falmouthcommodores.com					

► BOURNE BRAVES – Doran Park, Upper Cape Tech,
220 Sandwich Road, Bourne
► BREWSTER WHITECAPS – Stony Brook Field,
384 Underpass Road, Brewster
► COTUIT KETTLEERS – Lowell Park,
10 Lowell Street, Cotuit
► CHATHAM ANGLERS – Veteran's Field,
702 Main Street, Chatham
► HARWICH MARINERS – Whitehouse Field,
75 Oak Street, Harwich

► HYANNIS HARBOR HAWKS – McKeon Field,
120 High School Road, Hyannis
► ORLEANS FIREBIRDS – Eldredge Park,
78 Eldredge Park Way, Orleans
► WAREHAM GATEMEN – Clem Spillane Field,
54 Marion Road at Viking Drive, Wareham
► YARMOUTH-DENNIS RED SOX
"Red" Wilson Field,
D-Y Regional High School,
210 Station Avenue, South Yarmouth

SENIOR SELECT LIVING SOLUTIONS

**Considering a move to an Independent or Assisted Living Community?
Wondering what would be the best fit for you?**

As your local senior consultant/RN, I will meet with you to discuss all the options & help you determine the best living solution to suit your physical and social needs.



“Living Solutions for the Balance of your Life”

**YOU ARE MY PRIORITY!
CALL MARIAN FOR A FREE CONSULTATION
203-812-9570**

marianseniorselectliving@gmail.com

Thurston Residential

REAL ESTATE SERVICES



**PAUL & KATIE
THURSTON**

617-719-5300

THURSTONRESIDENTIAL.COM

INFO@THURSTONRESIDENTIAL.COM

THINKING ABOUT SELLING OR RENTING?

With over 30 years of experience, we've sold and rented hundreds of homes. We can expertly navigate the wide range of concerns that homeowners have in every transaction.

THINKING ABOUT RENOVATING?

DESIGN & BUILD • RENOVATIONS • REPAIRS & MAINTENANCE

No job is too large or small for us. You can trust Thurston Residential for all of your property needs!





New Seabury | Sotheby's

INTERNATIONAL REALTY



OPEN EVERY DAY ~ YEAR ROUND



Joe Callahan
Sales Associate



Matilda Eliason
Broker Associate



Jason Fredman
Sales Associate



Lydia Griffin
Sales Associate



Alexis Hanson
Broker Associate



Greg Holmes
Sales Associate



Michelle Labich
Sales Associate



Thalia Logan
Broker Associate



Ann Macdonald
Sales Associate



Sandra Morley
Broker Associate

**Most
Listings**

**NOBODY KNOWS NEW SEABURY &
THE COMMUNITY BETTER
THAN OUR EXPERIENCED AGENTS!**

**Most
Sales**



Marian Oost-Lievense
Sales Associate



Dorothy Oosterman
Broker Associate



Jason Stone
Broker Associate



Mark Thompson
Sales Associate



Andre Elichalt
Rental Agent



Elaine Sweeney
Director Sales & Marketing



12 Mallway, Mashpee, MA 02649 ~ 508.477.8300 ~ NewSeaburyRE.com

Each office is independently owned and operated

New Seabury

Sotheby's
INTERNATIONAL REALTY



Equestrian Compound, 2 Homes, State of the Art Facility, Heated Indoor Riding Arena on 7.42 Acres **\$2,995,000**



Overlooking Nantucket Sound & New Seabury's Ocean Golf Course. Private Beach & Guest House **\$12,000,000**

Boating, Beach, Equestrian, Golf.....We have it all!



Outstanding 5500 Sq. Ft. Home
Elevator, Deep Water Dock,
3 plus BR, 6.5 Bath **\$3,900,000**



Impressive Beach/Ocean-Front Home
4 BR, 4 Bath **\$3,775,000**



4 BR, 3.5 Bath Spectacular Custom Home
w/deeded beach rights **\$1,775,000**



Stunning Waterfront on Fells Pond
3 BR, 2 Full & 2 Half Bath **\$1,365,000**



Spacious Quality Built Contemporary
3 BR, 4.5 Bath **\$1,175,000**



Beautiful Golf Front Contemporary
w/Pool 4 BR, 5.5 Bath **\$1,175,000**

Each Office is independently owned and operated

A B LAST FROM THE PAST...



On Their Way to School

A mother and daughter are shown on their way to riding classes in the High Wood village of New Seabury. The community is the summer quarters for the famed New England School of Equestrianism, under the direction of Mr. and Mrs. William Wright of West Concord, Massachusetts. At the opening of each season, the Wrights move to their second home in High Wood, bringing along their horses and equipment and setting up school nearby, where the stables and riding rings are located. From there they conduct both formal and informal classes and rides, utilizing the miles of beach and bridle paths that are an integral part of the land.

The Wrights also conduct the annual New Seabury Charity Horse Show, the only such event on Cape Cod that is accredited by the American Horse Shows Association. The show attracts contestants to New Seabury from many parts of New England. In turn, New Seaburyites compete in horse shows on Cape Cod and elsewhere. The School of Equestrianism has for many years been associated with the Boston area colleges in their elective sports programs, and the Wrights are also known for their regular arrangements for the twice-weekly Mill Wood Hunts in Framingham, Massachusetts.

Cape Cod Standard Times,
New Seabury Special
Edition - date unknown



"Al Who...?"

"You never know who you might run into here," says tennis regular, Bill Sandler of Popponesset Island. Alexander Haig, presidential contender, was the guest of Dom and Inge Saraceno, who hosted a round robin tennis party for 100 guests last month.

Peninsula
Reporter Fall
1987



Children Attend Picnic

An informal picnic was held recently in the High Wood village of New Seabury for the children who reside in that area. Some of the youngsters were transported to the wooded section by pony cart along the bridle path. Others came by boat along the waterway that approaches the boundaries of High Wood. This picture was taken by a photographer from Look magazine who was in New Seabury on assignment.

Seabury Golf Likened To Pebble Beach

The eighteen-hole Championship, one of the two courses of the New Seabury Country Club, with the world renowned Pebble Beach by one of the many golfers who have played both. "Wherever you go," according to Bill Ezinicki, the New Seabury pro, "they speak of us as 'the Pebble Beach of the East.'"

The reason for the comparison is that both courses have a stretch that borders on water — Pebble Beach overlooks the Pacific Ocean, and New Seabury, Nantucket Sound. Unlike the California layout, however, the Cape Cod course has fairways running right along the sandy beach itself, for nine holes. As a colorful contrast, the back nine runs through typical Cape woods. The Championship is a par 72 course of 7,175 yards. Francis Ouimet called it one of the finest seaside courses he has ever seen.

For golfers with different de-

mands, there is an easier 18-hole course of 5,330 yards called the Executive. It is a par-64. The scene of the Executive is inland, where there are pine trees and fresh water ponds to provide a challenge. The Seabury courses were designed by architect William E. Mitchell.

Open All Year

Most New England and Long Island golf courses are closed during the Winter, but New Seabury remains open. Each year there is a New Year's Day tournament which attracts as many as 200 contestants. The regular golfing season at Seabury is a long one, too, starting early in the Spring and going well into the Fall, which is considered by many golfers to be the best time to play.

Pro Bill Ezinicki, who once played hockey for the Toronto Maple Leafs and the Boston Bruins, is assisted by Claudette LaBonte, one of the very few lady pros in New England. She and Ezinicki, in addition to teaching and playing golf, take part in the running of the Pro Shop, which carries a stock of sports equipment and clothing.

The New Seabury Country Club building was designed by Phineas

Cape Cod Standard Times, New
Seabury Special Edition- date
unknown



A TOWER OF POWER... is represented by the 100 foot antenna located opposite the New Seabury maintenance garage just off Rock Landing Road. But can you see it from the road? Fred Hopengarten, president of Channel One, which provides cable service to New Seabury, says it's innocuous and you'd never even know it was there if it wasn't called to your attention.

Peninsula Reporter - Fall/Winter 1987



At Cape prospective buyers get a distant view of a model you could see from the water (above), then, on land, a closer look through the windows (below) of a new home. The interior shown is captured by Solomon Harold Eastman. Visitors in living room below sit on "conversation pit" designed by Emily Malloy. The house (whose exterior is on the next page) was designed by Robert A. Myers, sells for \$118,900.



AT REST SINCE 1962 - The rock once planned for the U.N. now marks the entrance to New Seabury in Mashpee.



WHAM THE CLAM is the name of the little mascot you're apt to see running around New Seabury these days. She (or he, who knows?) is to remind people to hug our curves and enjoy the scenery while driving SLOWLY and observing traffic signs.

Peninsula Reporter - Summer 1986

Look Magazine - April 20, 1962

Peninsula Reporter - January 1984

1984 COUNCIL DUES RAISED TO \$20

The Board of Directors has voted unanimously to raise annual dues from \$15 to \$20 starting this year.

With about \$13,000 in the Council treasury, it has been obvious for a long time that the organization's activities need more property owner support. The Council is facing unusual expenses in 1984, and is urging all property owners to be sure to join.

At present the Council has 680 members. □



TOO TRANQUIL. Popponesset Bay as it looked last December. For the dredges had not arrived, and it looked as they may not be seen for many months. (See editorial)

Peninsula Reporter - Spring 1987



IN THE STILL OF THE NIGHT... the security patrol courses through our New Seabury streets, ever on the alert. Write down the emergency number: 428-2045.

LET US MARKET YOUR PROPERTY

Call our New

Peninsula Reporter - Spring 1987



ONE POINTE
Property Management & Realty

111 Rock Landing Rd
New Seabury, MA 02649
508-477-7303
service@onepointe.com
www.onepointe.com

SPRING REAL ESTATE MARKET

We Know New Seabury Better Than Anyone!

DeAnna Broadley: **Your Real Estate Expert in** **New Seabury**

Thinking about selling your home?

Thinking about an upgrade to another property?

Make the most of this year's Spring Market!

Contact DeAnna to make the easiest real estate transaction possible.

Coming Soon.....



One of the best values in New Seabury

133 Walton Heath Way

Direct Golf Front with Incredible View

\$439



REAL ESTATE
MLS

CMCA
COMMUNITY MANAGER OF
COMMUNITY ASSOCIATIONS

Your Real Estate Expert in New Seabury

After 19+ years of trusted service in this community, we are proud to offer the best market knowledge, the most resources, and the finest talent to guide you through any phase of buying or selling property in New Seabury.

SELLERS WANTED

Let us prepare your home for the greatest resale possible! From staging to repairs.... From marketing to in-house leads....

BUYERS WANTED

With our in-house design and construction staff, we can turn any property into the home of your dreams!



Contact DeAnna Broadley
to make your real estate
transaction as easy as possible.

508-477-7303

DBroadley@onepointe.com

- "I sold the largest home at the highest price in the history of New Seabury for \$8.4 Million. I sold a Maushop Unit for \$360k after only 78 days on the Market. Previously it was listed by two other leading offices collectively having in listed for over 789 days unsold."
- Working as a property manager gives me a distinct advantage as I know the properties in New Seabury and have been working with the owners for almost 20 years. I know the clientele and what their needs and likes are.
- Many seasoned realtors only interact with owners when they buy and sell. I interact with hundreds of property owners continuously through the year. This gives me a greater knowledge base than any other realtor.

I look forward to an opportunity to meet and discuss the New Seabury market, then see how One Pointe and I can fulfill your real estate needs

DeAnna Broadley



Protect



Improve



Live



The Association to Preserve Cape Cod Celebrates 50 Years of Environmental Protection on Cape Cod

Andrew Gottlieb

The Association to Preserve Cape Cod turns 50 this year. For five decades, the association—or APCC—has served as the region’s nonprofit environmental advocacy and education organization, working on behalf of all Cape Cod residents to protect, preserve and restore the Cape’s natural resources.

From its beginnings as a grassroots citizens’ movement to the present, APCC has been the leading environmental voice on Cape Cod, responsible for numerous landmark achievements that have helped protect water quality, preserve open space and advance stewardship of the Cape’s natural environment. APCC is actively engaged in every Cape Cod town, in the chambers of county government, at the State House and even in the halls of Congress.

While using its 50th anniversary as an opportunity to reflect on its past successes, APCC is still focused forward on critical environmental issues for Cape Cod. This year, APCC is once again leading the charge on water quality, collaborating with Cape Cod state legislators on the creation of the Cape and

Islands Water Protection Trust, which will provide much-needed funding for wastewater management projects across the Cape. Legislation for the trust fund, which recently passed both chambers of the legislature, is on its way to a conference committee and then to the governor’s desk. APCC is now committed to seeing the fund implemented and water cleanup projects launched. APCC’s other priorities include staving off threats to the Cape from offshore drilling, advancing programs to mitigate, plan for and adapt to climate change, preparing a State of the Waters report for Cape Cod, restoring coastal habitats, educating residents about sustainable natural landscape practices and working with communities on planning for Cape Cod’s future.

As a membership-based nonprofit organization, APCC relies on the support of Cape Cod’s residents, businesses and visitors to carry out its mission to protect the Cape’s natural beauty and iconic character for the next 50 years and beyond. To find out more about APCC, the work it does and how to become a member, visit www.APCC.org or call 508-619-3185.



Snowy owls seen at South Cape Beach and the Ocean Course.



Where great backyards begin!

NOW OPEN

724 MACARTHUR BLVD (Rt.28)

POCASSET, MA 02559

508-566-8207

www.eastonpool.com

RETAIL • SERVICE • CONSTRUCTION



The Power of One

ONE CALL
DOES IT ALL

— for all your property needs —

The Joyce Companies offer a single source solution for comprehensive design, installation and property maintenance, as well as the highest quality and value for your investment. We provide the power of one service provider for complete landscaping, property maintenance & concierge services.



THE JOYCE COMPANIES

www.joycecompanies.com

508-428-JOYCE (5692)



Beautiful Properties Begin Here...

Prizes for Longest
Drive & Closest to
the Pin for Men
& Women

Hole in One
\$15,000 Prize!

Reservations &
Payment Must
Be Received by
Fri., July 6th

COME PLAY THE OCEAN COURSE

Call Peggy at
508-539-0028

NEW SEABURY HOMEOWNERS

12th Annual Golf Classic

Monday, July 23, 2018

1:00 pm Shotgun Start • Scramble Format

New Seabury Country Club Golf Members: \$75 • Non-Members: \$145
Barbecue/Buffer and Awards at Popponesset Inn Immediately After Golf

	Name	Member	Non-Member
Golfer 1	_____	_____	_____
Golfer 2	_____	_____	_____
Golfer 3	_____	_____	_____
Golfer 4	_____	_____	_____
Subtotal:	_____	_____	_____

REGISTRATION FORM

Name: _____

Mailing Address: _____

New Seabury Address: _____

Phone: _____ Email: _____

TOTAL ENCLOSED: \$ _____

Please make check payable to Peninsula Council and send Registration Form with payment to Peggy Bone, Peninsula Council, 12 Mall Way, Mashpee, MA 02649. For questions or more information, call Peggy Bone at the Peninsula Council at 508-539-0028, or nsha@peninsulacouncil.com. This event is open to all New Seabury homeowners and their guests. Call or register today as event is limited to 144 golfers. Reservations and payment must be received by Friday, July 6, 2018.




Laurentide
 at Mashpee Commons
 A Northbridge Senior Living Community

NORTHBRIDGE SENIOR LIVING IS COMING TO THE CAPE

*Visit 'the Maureens' at our
 Welcome Center to learn more!*

Mashpee Commons:
 52 Market Street in Mashpee, MA

Call us anytime:
508.539.1300

..... Opening Summer 2018

INDEPENDENT & ASSISTED LIVING & AVITA MEMORY CARE

online: laurentidemashpeecommons.com

Pending EOE Approval

60 ft



**~ 24 HOUR HOME
 EMERGENCY RESPONSE
 ~ OPENING AND CLOSING OF
 HOMES FOR THE SEASONS**

Call Us Today!

CARPENTRY • PAINTING • MASONRY
 WET BASEMENT \ MILDEW SOLUTIONS
 DRAINAGE REPAIRS • CUSTOM DESIGNED PATIOS
 WALKS & WALKWAYS

508-888-6888

mj.fixall@yahoo.com

References available from New Seabury residents!

BRIGHT COVES

John and Leslie Hill
Timothy Keator

THE COTTAGES

Peter Lukes and Andrea
Chiaramonte
Vincent and Gail Fantegrossi

FELLS POND

James and Melissa Donovan
Aron and Olga Futer
Andre and Nancy Perron
Jasper and Kathleen White

GREENSWARD

Dennis and Suzanne Keane
Jordan Race
Bernard and Paula Tully
Eric and Connie Wong

HIGHWOOD

Hacking Circle 5, LLC

LITTLE NECK BAY

Robert Adler
Aleya and Marie Attia
Joseph and Carolyn
Campanelli

MEWS 4A

James and Karin Egan
John and Susan Fitzpatrick

MEWS 4B

Deborah Farr

MEWS 4C

Theodore and Mary
Panagakis

PROMONTORY POINTB

Ralph and Barbara
Henise

SANDALWOOD

Laurie Clayton
Kyle and Amber Smith
Stephen and Nicole
Spencer

SEASIDE

Brendon Giblyn

STENDAHL

Grace Kane

SUMMERSEA

Christopher Dougherty
James and Erin Hirbour
Carol Holahan

TIDEWATCH

Charles and Kimberly
Tuite
George Verghese and
Ann Kailith

VINEYARD REACH

Steve and Brenda
Pogorzelski

NEW HOMEOWNERS!

Welcome

Save Popponesset Bay: **Rolling into Spring**

Margie Decter

It was a record breaking weather year and thanks to our building up the dunes, the Spit has survived four nor'easters!

Thank you to the generous donors who responded to our need to fund immediate reparations to the Spit! We trucked over 7,000 cubic yards of sand to support the dune and, after a week waiting out the storms, the dredge completed its work on the channel, placing approximately 5,500 cubic yards of dredged sand on the Spit. And, we got it done before the April 1 deadline!

More funds are still needed! Only the first third of the Spit was able to be repaired. We are applying for a competitive grant from the state to help with our dune reconstruction, but will need matching funds from the community to support the funds. Can you please donate today?

No Dogs Allowed

On Saturday, March 31 we put up signs on the Spit that say "No Dogs" from April 1-September 1 to protect the

endangered species on the Spit. The Spit is co-owned by the Mass Audubon Society and is an endangered species habitat for endangered birds; what some don't realize is the mere presence of dogs (leashed or unleashed) scares the birds and prevents nesting and breeding. Unfortunately, there were many people last year who ignored these rules. As a result, we received an official warning and conditions of compliance from federal regulators at National Heritage. We have since developed a more protective policy around "No Dogs" and are asking for your support. The consequence of not following these orders is that we may lose our right to use the Spit (yes, the regulatory agencies can do this). I'm sure you agree that this would be detrimental to our community.

In addition to an enhanced security detail this summer, we ask you to please help us by speaking up and advising people that dogs are not allowed on the Spit from April 1 - September 1. We are also asking that you provide this information to your renters and new neighbors who may not be aware of these regulations.

A reminder of the other rules of the Spit:

- ~ Swim at your own risk
- ~ NO: alcohol, smoking, trash
- ~ Stay off the dunes
- ~ Use the crossovers

Please advance your 2018 contribution to Save Popponesset Bay

You can make a tax-deductible contribution by going to www.savepopponessetbay.org/donate. Or send a check to SPB, P.O. Box 920757, Needham, MA 02492. We also accept shares and matching corporate gifts. Your contribution helps us finance our work to preserve and enhance the Spit and keep the waterways in and around the Bay safe and navigable. And, all donors of \$500 or more will be invited to the Annual Fundraising Event on July 5 at the Cabana Club. It was sold out last year, so make your contributions/RSVP early!

Contact us at info@savepopponessetbay.org to learn more about SPB, the Cabana Club event on July 5, or to volunteer.



Mike Oleksak and Dawn Peterson helped install six new "No Dog" signs at the entrances to the Spit, at the more popular boat anchoring, spots, and on Audubon land.



A busy day at the Spit.



The Spit after our winter trucking and dredging projects were completed. .

Women's Club OF NEW SEABURY

Mary Jane Richardson

Women's Club of New Seabury welcomed back members and guests in April for *Cooking with Chef Caleb* at the Athletic Facility. The afternoon began with Chef Caleb Warr giving an interesting presentation emphasizing healthy meals made with grains, tofu, and spices followed by a luncheon complete with Ginger and Carrot Soup, Grain Bowls with Quinoa, Farro, and Tofu, and Flourless Chocolate Cake for dessert. The meal was a hit as was Chef Caleb as he made his way around to each table to answer questions and socialize with the group. It was the perfect way to catch up with friends and to celebrate spring!



WCNS' Event Schedule promises to bring with it a tremendous 2018, so "save the date" for the following summer events:

Patrick's Trivia Quiz - Lunch, Laughs, and Prizes!

Tuesday, June 12 at The Poppy, 12:30 PM

Girls Night Out with Music by Paul Good

Thursday, July 12 at The Poppy, 4:00PM

Girls Night Out

Wednesday, August 8 at The Poppy, 4:00 PM

College Light Opera Company

August: Date & Show To Be Determined

Summer Canal Cruise with the Men's Club

August: More Details To Come

Fashion Show with Designs from Port Cargo

Wednesday, September 12 at The Poppy, 11:30 AM

For more information on the above events, visit womensclubofnewseabury.com, or contact Mary Jane Richardson at mjr4700@comcast.net.

WCNS 2018-2019 Membership Drive is now underway.

Join us and experience how fulfilling it can be to help our community and have fun at the same time. Remember, you only have to live in or have once lived in New Seabury (or Daniel's Island, Popponesset, Popponesset Island) to be a member. For almost five decades members have contributed their time, talents, and financial support to numerous civic, educational, and charitable organizations in Mashpee and the broader Cape Cod community.

WCNS meets for monthly luncheons and programs with a concentration on the summer months. Other events are planned throughout the year. We hope you will join us to make friends, have fun, and better our community!

For further information please contact Jackie Korbas, Membership, at jkorbie@aol.com or visit our website (www.womensclubofnewseabury.com). Please see the Membership Form on the opposite page.



WOMEN'S CLUB OF NEW SEABURY

July 2018- June 2019 Membership Form



New () Renewal () Date _____

Name _____
Last First Middle Initial First Name for nametag

Local telephone # ____ - ____ - ____ Alternate / cell telephone # ____ - ____ - ____

Mailing Address – Street or PO Box _____

City, State, Zip _____

E-mail _____

Please check off or write in your areas of interest:

Philanthropy (scholarships; distribution of funds) _____ Membership (welcome new members) _____

Hospitality (greeters for luncheons; 50/50 raffles) _____ Publicity (photos, news items) _____

Suggestions for activities or programs are appreciated _____

Return form to WCNS, P.O. Box 906, Mashpee, MA 02649 with your dues of \$30.00.

Checks should be made out to Women's Club of New Seabury (WCNS).

Northstar Construction

New Homes • Additions • Remodeling • Demo-Rebuilds



**We offer full service Design,
Planning and Building Services.
Together we will design your project
to meet your needs and budget.**

***Custom Homes on
Your Lot or Ours!***

Since 1983

**465 E. Falmouth Highway, (Rt. 28), E. Falmouth
508-548-2641 • www.northstarconstruction1.com**



*A home is only as beautiful
as the amenities that come with it.*




508-539-8200 | Newseabury.com
20 Red Brook Road | Mashpee
Sales Cottage Open Daily 10am-4pm

**Oceanfront
Homes at Seaside**



**Quaint Award-Winning
Cottages at New Seabury**

New Home Construction | Private Beaches | Championship Golf | Tennis Complex | New Fitness Center | Oceanfront Pool

FOR ALL THE LATEST NEW SEABURY NEWS, CHECK US OUT ON THE WEB!

www.peninsulacouncil.com

If you have items of interest to
add to the website,
Contact Peggy Bone
at (508) 539 0028

If You Are Interested in Advertising
in the Peninsula Reporter
please contact Peter VanDoren,
Advertising Sales Executive,
Liturgical Publications, Inc.
Office: 262-207-2572
Cell: 920-450-7331
pvandoren@4lpi.com



MEN'S SOCIAL CLUB — AT NEW SEABURY—

We have an array of events planned for the current year that hopefully will satisfy the different desires of our group and attract some decent attendance.

Our welcome back reception is scheduled for May 24 at the Athletic Center from 4:30-6:30 PM. This time seems to work best for everyone in that it's late enough to end the day and early enough to extend the evening should that be part of a member's planning. The Club did a nice job with hors d'oeuvres last year and we expect another nice surprise this year. We'll talk about other events in some detail and have a few raffle items available.

A speaker luncheon is planned for June 13 at the Country Club. I have reached out to the Patriots organization to see if we might get one of their folks to address the group. This is scheduled for noon time on June 13.

Tickets for *Man From La Mancha* have been reserved (40) for July 13 at the Cotuit Center, and

there will be a wine and cheese reception before the show. It will be a nice evening for all who can attend.

A joint Men's and Women's Club canal cruise is scheduled for August 12. We have reserved the entire Viking boat for this event, with food, cash bar and entertainment. We can have 130 attendees for this fun-filled two hour cruise on the Cape Cod Canal. We will be sending out final information and the per person cost as summer moves along.

Work continues for a late summer/early fall speaker luncheon with a surprise speaker, the potential of a late afternoon cocktail reception at the Athletic Center enjoying the latest in the Chef's creations, and discussions are under way regarding a holiday reception with a Yankee Swap.

The Clubs at New Seabury are alive and well, and we are looking forward to re-engaging with fellow members and residents after our interesting winter and absent spring.

Stay tuned for more information. Please contact us should you be interested in becoming a part of this group and/or if you have suggestions for how we can make our offerings more interesting.

Joe Fisher - jfisher8623@comcast.net

Mike Richardson - Mike72147@comcast.net

24 HR EMERGENCY PHONE NUMBERS FOR RESIDENTS

Mashpee Police Department

Emergency Number: 911

Non-Emergency Number: 508-539-1480

Mashpee Fire Department

Emergency Number: 911

Non- Emergency Number: 508-539-1454

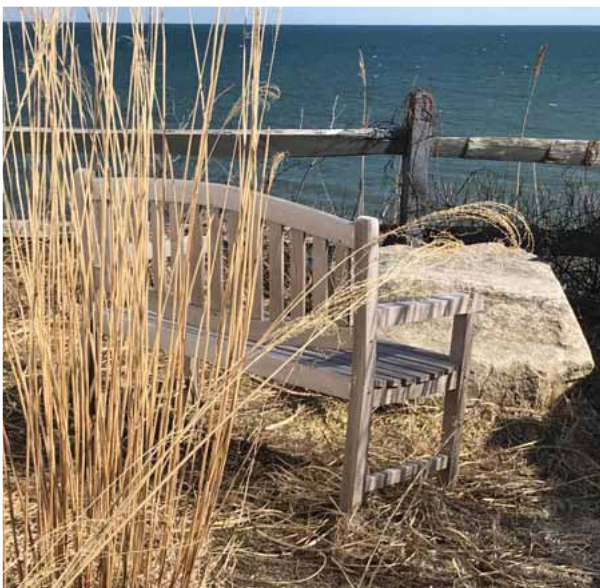
Remember...

Be sure to notify the Peninsula Council if you have a change of home address, phone, cell phone or e-mail.

Call us at (508) 539-0028 or e-mail us at nsha@peninsulacouncil.com.

Making sure our records are up-to-date ensures you of receiving any communications sent.

Thank you!



Photos by George List

QUALITY TREE & LANDSCAPE

GET THE JOB DONE RIGHT THE FIRST TIME!

Specializing in Large Tree Pruning and Removal with a 60' Life Track Machine.
Easily able to access the backyard, through gates, and across lawns.

We offer: Landscape Construction • Bobcat Service • Tree & Shrub
Transplanting (all sizes) • Tunneling under Driveways, Walkways, Patios, and
Roads without damage for Lighting and Irrigation • Spring & Fall Clean Ups
Cobblestone Driveways • Mulching • Fencing • Seeding



CALL TOM STARUCH TODAY FOR A FREE ESTIMATE

508.477.4034

Fully Insured • References Available

COUNTRY CLUB HAPPENINGS

**Julie Quintero-Schulz
and Pedro Gonzalez**

The Club at New Seabury has been quite busy this past winter season implementing projects, reviewing service level standards, and hiring a few new staff, including a new Director of Food & Beverage and Director of Marketing. Pedro Gonzalez has worked in the restaurant industry for over 30 years. For the last four years he has served as Executive Director of Restaurants, Director of Food & Beverage, and Director of Fine Dining at The Greenbrier, America's Resort in White Sulphur Springs, West Virginia. We are excited for Pedro and his team to bring the food and beverage operation to new heights. Julie Quintero-Schulz comes to us from the Cape Cod Chamber of Commerce with a connected background to Cape Cod and a tourism knowledge-base. She will pay specific attention to continually improving the marketability and membership growth surrounding New Seabury.



Pedro Gonzalez is welcomed to The Club at New Seabury as Director of Food & Beverage.



Julie Quintero-Schulz has joined The Club at New Seabury as Director of Marketing.



There will be an upgraded focus throughout our dining locations this year with social events. We know it is important for the New Seabury community to gather as friends, and we have created *Grill Nights* every Friday and Saturday, beginning June 22nd at the Athletic Club Poolside Grill. Members will enjoy casual, comfort food by the pool into the evening, while enjoying warmth by the fire pit. In addition to *Wine Down Wednesdays* on July 25th and August 29th, a *Wine Down Dinner* will be offered at the Club House, featuring wines sampled throughout the month and fine dining. Three new social events will also take place, including *Beverages on the Balcony* on June 23rd, *Cocktails on the Beach* on July 14th, and *Midsummer's Night Martini* on August 25th. And don't miss out on the *Bourbon, Cigar, & Whiskey Dinner* at the Club House on September 15th!

Additionally, new art classes have been scheduled, including *Mussel Wreath Making* on June 19th, *Framed Glass Art* on July 17th, *Nautical Serving Trays* on August 14th, and *Calligraphy Writing* on September 6th.





Developer's Report

Greetings from the Sales Cottage

Mike Degnan

As we await spring to arrive at New Seabury, there are some awesome opportunities available for new home purchases. Construction remains strong at the Cottages at New Seabury. We continue to place new build purchases under agreement and are approaching completion of over 60% of the Cottages neighborhood. The remaining inventory of completed homes is now being offered for a limited time at deeply discounted prices. (\$40K - \$100K under similar new home). There is no better time to act. Only a limited number of these homes are available. Learn more about these outstanding values at our website, NewSeabury.com

Only one home remains at The Preserve at Flat Pond. Grandly positioned within the gated community sits this handsome and luxuriously detailed four-bedroom residence. Walk inside and observe the fine craftsmanship and careful attention to detail that has been built into this truly captivating home. This home is the final new home available within the Flat Pond community. It also offers outstanding outdoor living space (complete with a large outdoor pool), a separate guest suite and peeks of Nantucket Sound. Learn more at NewSeabury.com



Twilight at the Cottages

Four luxurious deeded beach homes are completed and ready for occupancy at our Oceanfront Homes at Seaside community. Available homes offer wonderful golf and oceanfront views. Beautifully designed and located within a magnificent surrounding, these are truly spectacular homes. Review recently adjusted pricing at NewSeabury.com

Opportunities are available to view all our model homes by visiting the Sales Cottage at the entrance of New Seabury. We are open daily 9-5. It's best to schedule an appointment for viewing in advance to ensure timely attention and viewing opportunities. The Sales Cottage can be reached at 508-539-8200.

Looking forward to summer 2018.

Heather, Patty, Tyler, Meredith and Mike



news you can use

• at New Seabury •

Now Open!

Naukabout Beer Company Brewery and Tap Room

13 Lake Avenue • Mashpee
508-419-6273

*The opinion in our house...
It's great!*



Coming This Summer

ESTIA on MAIN

Catherine and Nick Markantonis will open another ESTIA restaurant this summer at 117 Main Street in Falmouth. Word has it that it will be a much larger location than the Mashpee restaurant with a bigger bar, outside dining, and both indoor and outdoor waiting spaces. The outdoor space will be complete with fire pits.

Don't worry.... ESTIA at Mashpee Commons will also be open so you can still get your favorite meals, pizzas, cocktails, and apps from your favorite servers, bartenders and hostesses!



modern greek cuisine
coal fired pizza

MEET RICKY

Rick Corey is new to the Peninsula Council, but not to the area. Born and raised on Cape Cod, Rick is the owner of Coriste Lawn Maintenance. He has a degree in Horticulture/Plant Science from The State University of New York, Farmingdale, and has been getting his hands dirty for 19 years.

Rick is also an associate of Tom Staruch's Quality Tree, so they work hand in hand when it comes to keeping our area clean and free from landscaping debris, contacting each other when they see something that is best handled by that person.

Rick has joined us at the Patriots games over the years, so we know him well, and are pleased that he has come on board. He has met a few of our Village Chairs to get to know them and make sure that he is working in tandem with their wishes. So far, all have welcomed him to "the fold", and we are sure the rest of you will find his work to be to your satisfaction.

Stop and say hi, if you see him out and about, and welcome him to our family here in New Seabury.



Ricky Cory, the Peninsula Council's newest landscaper.



• at New Seabury •

news you can use

Beware!

Callers pretending to be grandkids continue to target older Americans!

Grandparents in our own New Seabury neighborhood have received phone calls from their “grandchildren” asking for money, whether it be for money to spring them from jail, or to pay medical bills, etc. These scammers are smart and deceitful and have been known to use the actual names of the person’s grandchildren. Scammers do their research via social media - Facebook or Twitter, and/or they may buy or steal personal data.

So, beware! Don’t be a victim of a phone scam! AARP Bulletin, February 2017 recommends the following:

- 1) Ask the caller questions to determine their authenticity/identity.
- 2) Never say yes to a wire transfer based on a single phone call. Contact the person directly on their home phone or cell phone.
- 3) Use antivirus software on your computer to protect intruders from obtaining your personal information.
- 4) Don’t open file attachments in your email from strangers.
- 5) If you realize that you’ve been scammed after you’ve completed the money transfer, contact the money transfer service. It may not be too late to retrieve your money. Don’t be embarrassed!



Information obtained from AARP Bulletin, February 2017.

2018 BRUSH PICKUP

The following Villages will have Spring Brush Pickup the week of May 21:

**BRIGHT COVES
GREENSWARD**

**THE MEWS
SUMMERSEA**

**FELLS POND
HIGHWOOD**

**SANDALWOOD
TRITON SOUND**

Beginning in May, please place all branches to be picked up on your property, next to the street. All brush should have the thickest portion facing the street for the most efficient removal by the contractor. The maximum trunk diameter allowed is 6 inches. Only brush will be picked up. No leaves, trash or other debris, is allowed. Your observance of these guidelines is appreciated.

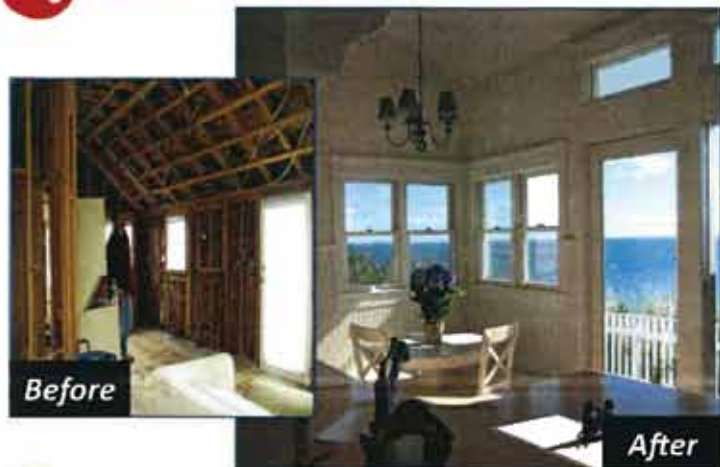
We appreciate your patience in not placing brush on your property until early May. Our vendors are busy and can only schedule this time in May to pick it up, and if it’s put out too soon it just sits there working adversely to the purpose of a brush pick up, which is to improve the overall look of our community. Additionally, this is a benefit for you our resident, and not an opportunity for landscapers to avoid doing their jobs. Please make sure if you have a landscaper that they do the entire job for you, including disposal.

The Peninsula Council has one brush pickup per year – in May. Please do not leave brush on the side of the road at any other time of year.

One Pointe Has The Power To Get Projects Done



Transformation of a Maushop Seaside Cottage



One Pointe's success is driven by dedication to always providing the very best property management to the homeowners and associations we serve.

- It is One Pointe's **experience** that has developed our instinct for anticipating our clients' needs.
- It is One Pointe's **commitment** to always provide superior customer service
- It is One Pointe's **work ethic** for completing tasks with a sense of urgency.
- It is One Pointe's **talent** for understanding our industry and always being one step ahead.
- It is One Pointe's **customer service** that is second to none.



Kitchen Design & Remodel in Greensward Village



THE OWNERS WERE AMAZED!!

"The transformation is unbelievable — This project, as always with One Pointe, was on time and on budget!"



Bright Coves DREAMY

Transformation and Fantasy Play Room

"We are members of One Pointe because you don't just say 'you will respond' — but because you ALWAYS ACTUALLY DO!"
— member since 1998



Protect



Improve



Live

“Let Our Family Help Your Family”



Chris, Kristen, Wendy, Keats III



“For those intent on a secure retirement.”

Investment Management
& Financial Planning

508.771.8900

amrfinancial.com



Wills & Trusts ~ Estate Planning
Assistance after a death

508.775.7800

boydandboydpc.com



*Tune in Saturdays from 3:00 - 5:00pm on WXTK 95.1 FM
(or live streaming on 95WXTK.com) to Cape Cod's Financial Radio
Talk show hosted by Chris Boyd, CASL®, CFP®
for entertaining discussions on all things financial.*

1060 Falmouth Road, Suite B, Hyannis, MA.

Asset Management Resources, LLC (AMR) and Boyd & Boyd, PC are not affiliated companies.

AMR is a Registered Investment Advisor.

PROFESSIONAL SERVICES YOU CAN TRUST

Ninety Nine 99

**9 REAL
sized
entrées**

8 Ryans Way
Mashpee

508-477-9000



WYNN & WYNN
ATTORNEYS

Robert F. Mills
Attorney

300 Barnstable Road
Hyannis, MA 02601

(508) 775-3665

Telecopier: (508) 775-1244

1 (800) 899-3003

rmills@wynnandwynn.com
www.wynnwynn.com

**Tree
Musketeer**

URBAN ARBORIST

SCOTT SWETISH

(508) 540-8585

INSURED • ISA CERTIFIED

**ANNIE KING
LANDSCAPE
MAINTENANCE, INC.**
508-495-0781

30 Years Experience
Fully Insured

Landscaper for the
Peninsula Council

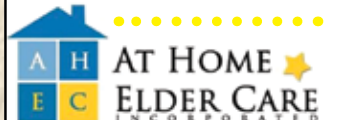
**Cape Coastal
Computers**

Virus & Spyware Removal
Network & Wireless Networking
All Your PC Service Needs

508.457.7465

121 Locust St., Falmouth, MA
info@capecoastalcomputers.net

*There's no place like home.
We make it possible to stay there.*



**AT HOME
ELDER CARE**
INCORPORATED

Osterville, MA
www.athomeeldercareinc.com
Contact: Patricia McDonough
508-420-5200

**LBM
Masonry &
Landscaping**

(774) 836-5307

Glare Care

Professional Glass Tinting
Residential & Commercial
Auto & Marine

A Father-Son Owned & Operated Business

www.glarecare.net

Designer Window Films By **MADICO**

Sandwich, MA • 508-888-7787



CAPE'S BEST CLEANING

Meticulously Clean • Excellent Service

Beatriz DaSilva & Cleide Dias

Call Today: **774-487-4979**



Linhares & Son Landscape, Inc.

Maintenance, Construction & Irrigation
Fully Insured - Commercial & Residential

phone: (508) 477-0189

fax: (508) 477-6553

email: LinSonLan@aol.com

www.linharesandson.com



Cape Cod Property Management Experts

Stephen Whalen, Licensed Real Estate Agent

(508) 364-8737

Restoration Solutions LLC

RestorationSolutionsLLC.net

smwhalen11@gmail.com • P.O. Box 336, Marstons Mills, MA



**Termite, Pest and Turf
Management**

We Never Rest When a Pest is Your Guest

- Termite and Pest Control • Lawn Fertilization
- Nuisance Wildlife Control • Lawn Aeration
- Tick Control • Vegetation Control
- Mosquito Control • Poison Ivy Control

(508) 711-BUGS (2847)

347 West Main Street

Hyannis, MA

www.FowlerAndSonsInc.com

**JOSEPH S. RUO
MASTER PLUMBER**

Installations
Repair and Gas Fitting

508-477-8024

Lic. No. 12031



Katie Drew
MASSAGE THERAPIST

508.873.3714 • K.MDREW@YAHOO.COM



Viti



AMG
METRIS
SPRINTER

Serving
Cape Cod

We bring the test drive to you.

2018 GLC 300 4Matic



Lease for
\$469
per month

36 months. 30,000 total miles. \$4707 due at signing.
Call dealer for details.

2018 E300 4Matic



Lease for
\$589
per month

36 months. 30,000 total miles. \$5405 due at signing.
Call dealer for details.

2018 S60 T5 AWD Dynamic



Lease for
\$249
per month

36 months. 22,500 total miles. \$5000 plus fees due at signing.
MSRP: \$39,735. Stock # V3038. Call dealer for details.

2018 XC90 T5 AWD 7-Passenger



Lease for
\$429
per month

36 months. 22,500 total miles. \$5000 plus fees due at signing.
MSRP: \$55,705. Stock # VT3090. Call dealer for details.

2018 Metris Vans



Starting at
\$25,995

Call dealer for details.

2018 Sprinter Vans



Starting at
\$33,995

Call dealer for details.

Serving Cape Cod. Free Pickup, Free Delivery and Free Loaner

To get your best number, call our number.

888-BUY-VITI

975 Fish Road in Tiverton, off Route 24 S

VITI.COM



PENINSULA REPORTER

12 Mall Way
Mashpee, MA 02649

FIRST CLASS MAIL

U.S. POSTAGE

PAID

PERMIT NO. 188
NEW BERLIN, WI

